

Charging TI-Nspire™ CX and TI-Nspire™ CX CAS handhelds

There are several options for charging your TI-Nspire™ handhelds:

- Connect to a computer using the supplied USB cable. *(Requires TI-Nspire™ computer software or TI-Nspire™ Computer Link software be installed before connecting.)*
- TI-Nspire™ Wall Adapter *(Contact your educational dealer)*
- TI-Nspire™ Docking Station *(Multiple handhelds)*



Charging your TI-Nspire™ handheld using a computer

The TI-Nspire™ handheld can be charged from a computer. TI-Nspire™ software **must** be installed prior to connecting the handheld to ensure the appropriate drivers are installed. Power management controls on some computers may prevent continuous charge via the USB port. Stand-by and sleep modes on laptop computers typically terminate USB connectivity to conserve power. In some cases this can be adjusted through the device manager:

- Install the TI-Nspire™ software **before** connecting the handheld to the computer. If you do not have access to the TI-Nspire™ software, install the TI-Nspire™ Computer Link software (Free).
- Once the software is installed connect your handheld to the computer using the USB cable provided.
- Check the connectivity between the handheld and the computer. A simple way to do this is using the screen capture tool in either the TI-Nspire™ software or the TI-Nspire™ Computer Link software.

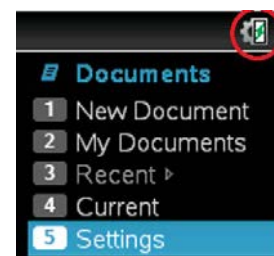
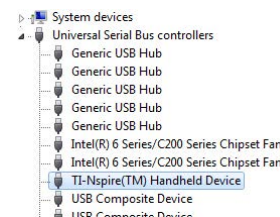
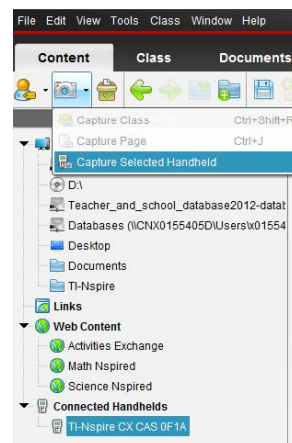
Note: When capturing a screen from the handheld make sure the handheld is connected and selected. (Shown opposite)

Another option for checking connectivity between the computer and handheld is the Device Manager (Windows®) or System Profiler (Mac®). Locate and expand the Universal Serial Bus controllers and select: TI-Nspire™ Handheld Device.

(Shown opposite)

- When the handheld is charging the battery icon on the top right corner of the handheld screen will display a 'charging' symbol. (Shown opposite)

Note: Charging status on the handheld can be checked via the **Settings** option on the home screen. Select **Settings** followed by **Status** to view the current level of charge. The status screen is **not** automatically refreshed, return to the home screen to refresh the charge status information.



Charging your TI-Nspire™ handhelds using the TI-Nspire™ Wall Adapter

The TI-Nspire™ Wall Adapter (not supplied) can be used to charge the TI-Nspire™ handhelds. The TI-Nspire™ Wall adapter provides a USB outlet and is connected to the handheld via the USB computer-to-handheld cable.

Make sure the TI-Nspire™ Wall Adapter is designed for Australian mains supply. Other wall adapters including those designed for overseas may not charge the handheld or in extreme situations, damage the unit. (Warranty is void if the product is damaged by an unapproved wall adapter.)



The TI-Nspire™ Wall Adapter s can be purchased from our educational dealers:

Abacus Calculators

Tel: 1800 998 424

Email: school@office.abacus.com.au

Website: www.abacus.com.au

Calculator King

Tel: 1800 246 226

Email: sales@calculatorking.com.au

Website: www.calculatorking.com.au

Carron Calculators

Tel/Fax: 08 8342 0546

Email: cemoule@internode.on.net

Haines Educational

Tel: 03 8736 6000

Email: sales@haines.com.au

Website: www.haines.com.au

Charging your TI-Nspire™ handhelds using the TI-Nspire™ Docking Station

The TI-Nspire™ Docking Station is designed for classroom use where multiple handhelds require charging. Information about charge and status is displayed using a series of LEDs on the TI-Nspire™ Docking Station. The TI-Nspire™ Docking Station must be connected to a mains power supply.



The TI-Nspire™ Docking Station can also be used to send files to multiple handhelds when connected to a computer with the TI-Nspire™ Teacher Edition software or TI-Nspire™ Navigator™ software installed.

Charging Troubleshooting for TI-Nspire™ handhelds

The most common error when attempting to charge the TI Rechargeable Battery is via a computer. Termination of power supply to the USB port due to the computer or computer settings prevents the handheld unit from charging. Charging the TI-Nspire™ handheld for the first time takes between 4 and 6 hours, thereafter charge time depends largely on the status prior to charging. If charging from a computer does not produce the desired result try:

- Using the approved TI-Nspire™ Wall Adapter
- Resetting the handheld device using the reset button on the reverse. (Shown opposite)



TI Rechargeable Battery maintenance for TI-Nspire™ handhelds

Lithium-ion batteries have a limited life, which is affected by several factors: environment, storage, the number of charge/discharge cycles, and level of discharge/charge. To extend the TI Rechargeable Battery lifespan and battery life, we recommend following these simple guidelines:

1. Avoid heat and humidity:
 - TI Rechargeable Battery is designed to operate optimally at room temperature.
 - Heat can reduce lithium-ion battery life.
 - High humidity environments should be avoided.

2. Usage and Charging:
 - As lithium-ion batteries age, they lose capacity. When properly maintained and under normal usage, batteries are expected to last at least several years.
 - If you use the TI-Nspire™ handheld regularly, recharge the TI Rechargeable Battery often. Avoid waiting until it is fully discharged.
 - If you do not use the TI-Nspire™ handheld regularly, fully recharge the TI Rechargeable Battery at least once per month.
 - Do not leave the TI-Nspire™ handheld connected to a charging device for longer than 3 days.
 - Use only TI Rechargeable Battery approved for the TI-Nspire™ handhelds.
 - Use only charging devices approved for the TI-Nspire™ handhelds.

3. Recommendations for storing TI-Nspire™ handhelds with lithium-ion TI Rechargeable Battery for 3 months or longer:
 - The best temperature for proper care and storage of lithium-ion batteries is between 0–25°
 - Extended storage can cause batteries to discharge deeply, which can deteriorate the lithium-ion cell and reduce the TI Rechargeable Battery capacity, service life and ability to recharge. It is recommended the TI Rechargeable Battery be fully charged before putting the handheld in extended storage and that it be recharged fully every three months while in storage.

4. Update your TI-Nspire™ handheld Operating System (OS) as new updates become available. OS updates may contain new programs to optimize TI Rechargeable Battery life.